

EUREKA Manta™

MULTIPARAMETER SYSTEM



HIGHLIGHTS :

■ Available Sensors:

Temperature	Depth
Dissolved Oxygen	Turbidity
Conductivity	Level/Stage
pH	Chlorophyll (forthcoming)
ORP	Optical DO (forthcoming)

- Fresh, salt and brackish waters
- Profiling or unattended monitoring
- On-board Memory
- Free Windows® software



eureka™
environmental engineering
BEST INSTRUMENTS BEST SERVICE BEST VALUE

RELIABLE, MULTIPARAMETER

INSTRUMENTATION The Eureka Manta™ water quality monitoring instrument is designed to give you superior reliability in the field. The Manta is available in three different-sized housings to accommodate your choice of two to eight different water quality sensors.

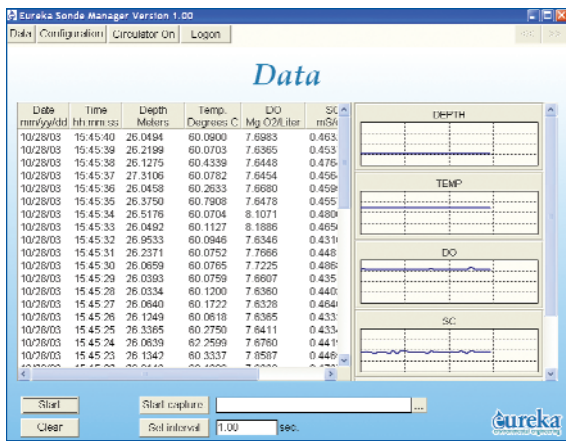
A VARIETY OF FIELD USE APPLICATIONS

The Manta can be used in fresh, salt and brackish waters. A flow through cell is also available for ground water applications. For profiling, pair the Manta with Eureka's Amphibian™, a Pocket PC-based field display unit. Add a battery pack and you've got 30 days of power for long-term monitoring. The Manta comes equipped with memory, and with its SDI-12 and RS-232 output, you can connect to third-party dataloggers as well as personal computers.

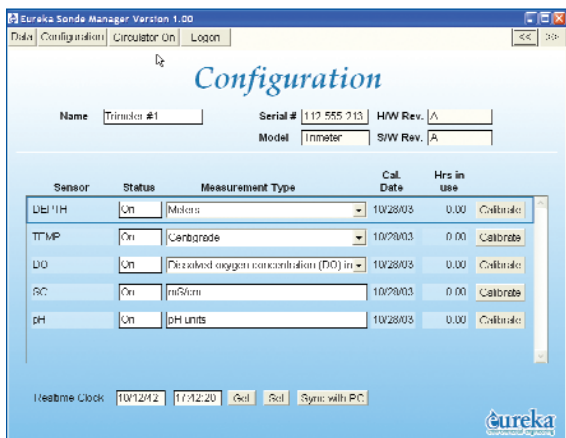
STANDARD METHODS Eureka sensors are chosen for their superior functionality in the field, because we want you to have the most reliable data possible. Sensors are from third-party manufacturers and are proven trustworthy and dependable. Where applicable, sensors meet specifications as required by the *Standard Methods for Examination of Water and Wastewater 20th Edition*.

EASY-TO-USE, FREE SOFTWARE Eureka has developed modern Windows®-based software to guide you through the setup, calibration, and data download processes. It provides real-time graphing so you can visually recognize when your readings have stabilized. The calibration log provides a regulatory record of instrument calibration history.

9715-A Burnet Road, Suite 400-A | Austin, Texas 78758
512 302-4333 | fax: 512 323-6911 | sales@eurekaenvironmental.com
www.eurekaenvironmental.com



MAIN DATA SCREEN: Free Windows® powered software is designed for ease-of-use. Quickly and easily view live data, calibrate and setup your instruments, and upload logged data.



CONFIGURATION SCREEN: Change your parameter setup easily, and view the last calibration date.

EUREKA TECHNICAL INNOVATIONS AND ADVANTAGES:

- SNAP-ON DO MEMBRANES – Changing DO membranes is much easier with snap-on caps. They provide uniform stretching for more consistent data and eliminate bubbles and wrinkles.
- FLAT GLASS PH SENSOR – The pH bulb is actually flat, making the sensor easy to clean and difficult to break.
- OPEN FLOW CONDUCTIVITY – The open flow design prevents air bubbles from interfering with the reading and allows sediment to fall away from the sensors.
- MCVAN™ ANALITE TURBIDITY – The innovative and practical design provides superior linearity. Mathematical algorithms eliminate sand and similar particles from turbidity calculations.
- ACCURATE AND PRECISE STAGE – The digital pressure transducer is designed for long-term deployment. With an accuracy of ± 0.005 ft, this sensor is guaranteed to stay within specification for up to one year.
- AUTOMOTIVE-GRADE COMPONENTS – Main processor and other critical components are automotive-grade for increased durability in the field.
- CLEAR PLASTIC HOUSING – Allows the user to see if the double o-ring seals have been breached. LED's on the circuit board provide diagnostic and operational information.
- POLYURETHANE CABLES WITH WATER-BLOCK – Cables are substance-filled to prevent water from traveling in the event of a minor cut.
- DETACHABLE CABLELOCK™ SYSTEM – No more pins or connectors that can break. Eureka's system allows cables to be easily changed while maintaining a sealed system with fewer components, reducing maintenance and repair costs.
- FIELD-REPLACEABLE SENSORS – Sensors can be quickly and easily replaced in the field. Internal electronics are protected from exposure.
- ENVIRONMENTAL TESTING LAB – In Eureka's complete testing lab, all instruments are fully tested before shipment.
- COMPREHENSIVE SUPPORT – We offer free phone support, so call us with questions. In the event of a repair, we'll get your instrument fixed within seven business days or provide a free loaner. We'll email you when the instrument arrives, is fixed and is shipped.



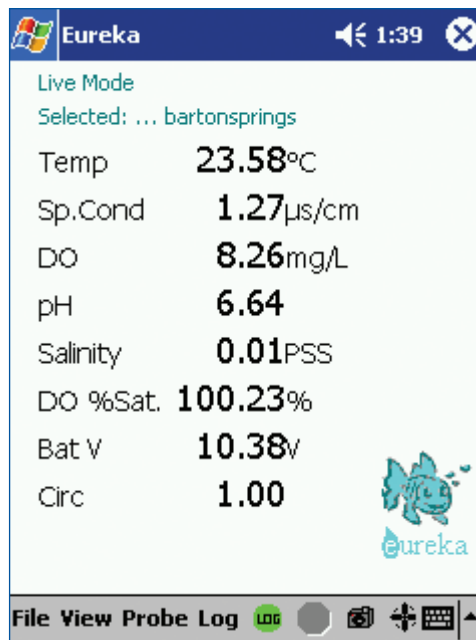
9715-A Burnet Road, Suite 400-A | Austin, Texas 78758
 512 302-4333 | fax: 512 323-6911 | sales@eurekaenvironmental.com
www.eurekaenvironmental.com

PRELIMINARY SPECIFICATIONS (SUBJECT TO CHANGE):

Parameter	Range	Resolution	Accuracy
Temperature	-5 °C - 50 °C	0.01 °C	± 0.08 °C
Dissolved Oxygen (Clark Cell)	0 - 50 mg/l	0.01 mg/l	± 0.2 mg/l ≤ 20 mg/l ± 0.6 mg/l > 20 mg/l
Conductivity	0 - 100 mS/cm	4 digits	± 0.5% of reading
Turbidity	0 - 3000 NTU	0.1 NTU	< 1% of reading to 100 NTU < 3% of reading to 400 NTU < 5% of reading over 400 NTU
pH	2 - 12 units	0.01 units	± 0.2 units
ORP	-999 - 999 mV	1 mV	± 20 mV
Depth	0 - 25 m 0 - 50 m 0 - 100 m	0.01 m	0.2% of range
Stage (vented)	0 - 33 feet	0.001 ft	± 0.005 ft

ABOUT EUREKA

Eureka Environmental Engineering was formed in 2002 to provide the finest tools for monitoring our most precious resource – water. Employee-owned and operated, Eureka's professional objective is to ensure that each product sold offers the highest level of value and service possible. Under the guidance of our principals and board of advisors, the company draws on over 200 combined years of industry experience to make your job easier.



The Manta connects to Eureka's Amphibian™ for real-time, profiling applications.

